



# ESTABLISHMENT OF TAGORE CULTURAL CENTRE JP NAGAR, BENGALURU



Promoter:  
[Divyajyothi Vidya Kendra,](#)  
Nelamangala  
10<sup>th</sup> June 2019



# CONTENT

- About us
- Activities of the promoter
- Salient features of the project
- Timeline
- Budgetary estimate
- Current project status

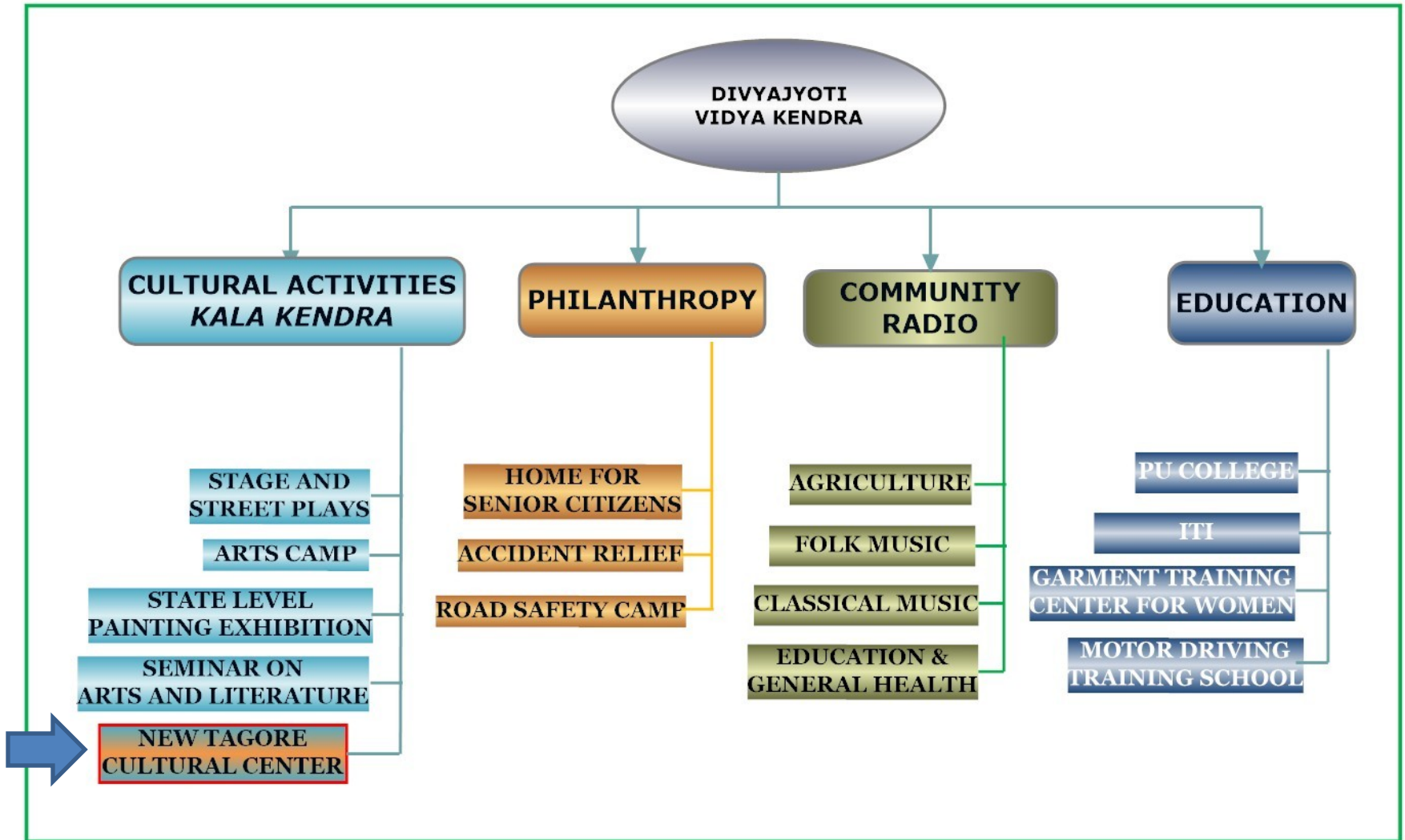


# ABOUT US

- Ours is a not-for-profit, NGO committed for the all round social well being through various community based *cultural, educational, awareness, philanthropic* programs and activities for the benefit of all the sections of the society, in particular, socially backward and downtrodden ones.
- Registered under the Karnataka Societies Registration Act 1960 on **28-9-1991**. Has a track record of 25 years of selfless, well documented and recognized social service since its inception.
- Located at *Nelamangala* - a sub divisional town in the Bengaluru rural district and situated 30 KM away from the State Capital on Bengaluru-Pune NH.



# OUR ACTIVITIES IN NUTSHELL





# ACTIVITIES OF THE *KALA KENDRA*



# STAGE PLAYS

- “*Kanjoos Ganda Dildar Hendathi*” highlighting the importance of family values was staged at Basavanna Devara Mutt Kala Mandira
- “*Naguve Arogya*” stresses the importance of keeping oneself joyful and celebrate the life was staged at Nelamangala annual fare.
- “*Ekalavya*” based on the discrimination faced by the popular character of the epic *Mahabharatha* on the basis of his upbringing to highlight the evils of the deep rooted social discrimination in our society
- *More than 15 such plays have been successfully staged .....*





# STREET PLAYS

- Popular and informal form of theatrical performance held in outdoor public spaces like weekly markets, car festivals etc without a specific paying audience on social issues like ethics, alcoholism, health, hygiene etc., Following plays are staged in several places in and around Tumkur/Bengaluru rural district.
  - “*Echara*” was based on the woes faced by a farmer when he approaches a bank for a loan to dig a well in his field.
  - “*Hasire Nammellara Usiru*” brings out the importance of environment and dichotomy between rural and urban life.
  - “*Arogya Jagruthi*” highlights the importance of medical care and hospitalization during the child birth.
  - *More than 20 such street plays .....*







# ARTS CAMP

- A two day camp in which troupes on light classical music, folk arts like *Garudi Gombe* – a type of puppet show, *Dollu Kunitha*, *Somana Kunitha*, *Tamade vadana* –variant of village drum, *Hari kathe* – a great tradition of lyrical story rendering with semi classical music background was organized.
- A State level drawing and painting camp in association with Tumakuru University and State Govt in Tumakuru in which 25 painters participated .
- A symposium and exhibition of Paintings at Belgavi with support from State Government and Chitra Kala Parishad was organized.







- A FM Community radio licensed by the Ministry of Information and Broadcasting, Govt of India after detailed and thorough background checks on the credibility of our NGO and its activities.
- A simple, but, powerful electronic media for providing *voice for the voiceless* and weaker sections.
- We produce and broadcast content to share and showcase the talent, traditional knowledge, artistic expression of our community members on health, education, agriculture etc .






Ministry of Information & Broadcasting  
Government of India

## National Community Radio Awards 2013

**Second Prize**

in the Promoting Local Culture Category  
is awarded to **Neladani CR**, Bangalore, Karnataka  
for its programme *Janapadaloka*

11th February, 2013  
New Delhi

  
Joint Secretary (Broadcasting)



# PROJECT BRIEF

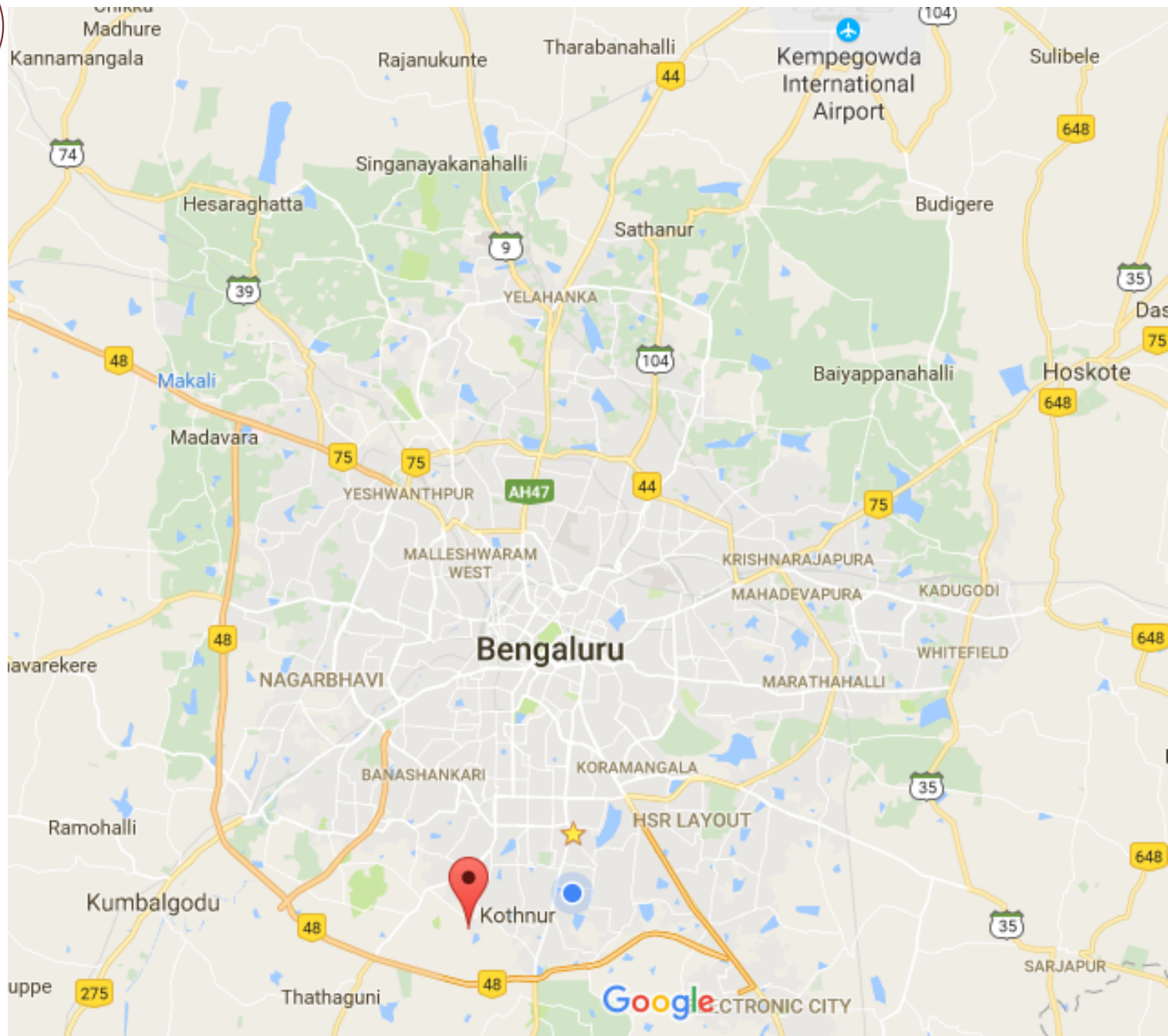


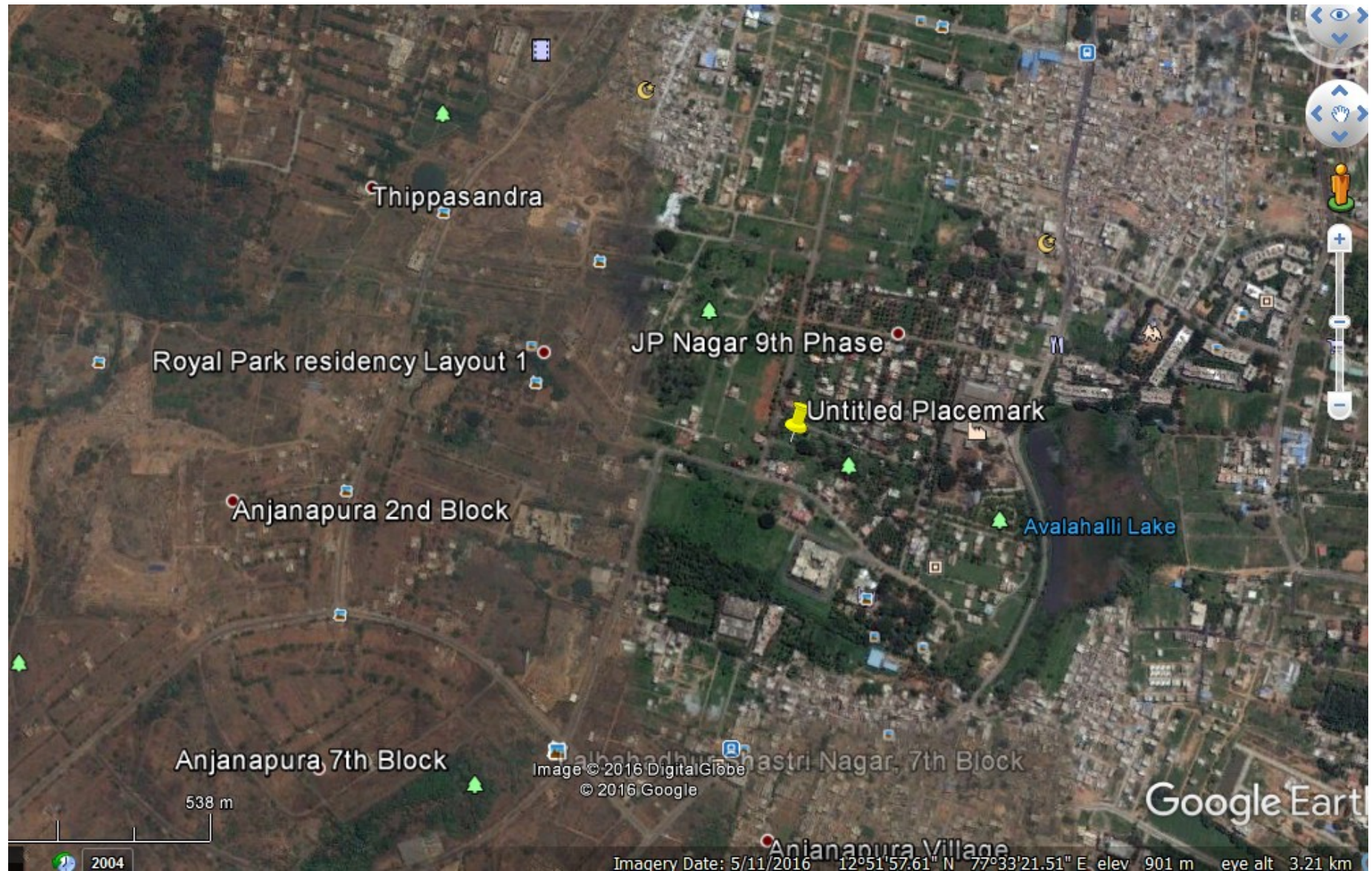


# PROJECT SITE

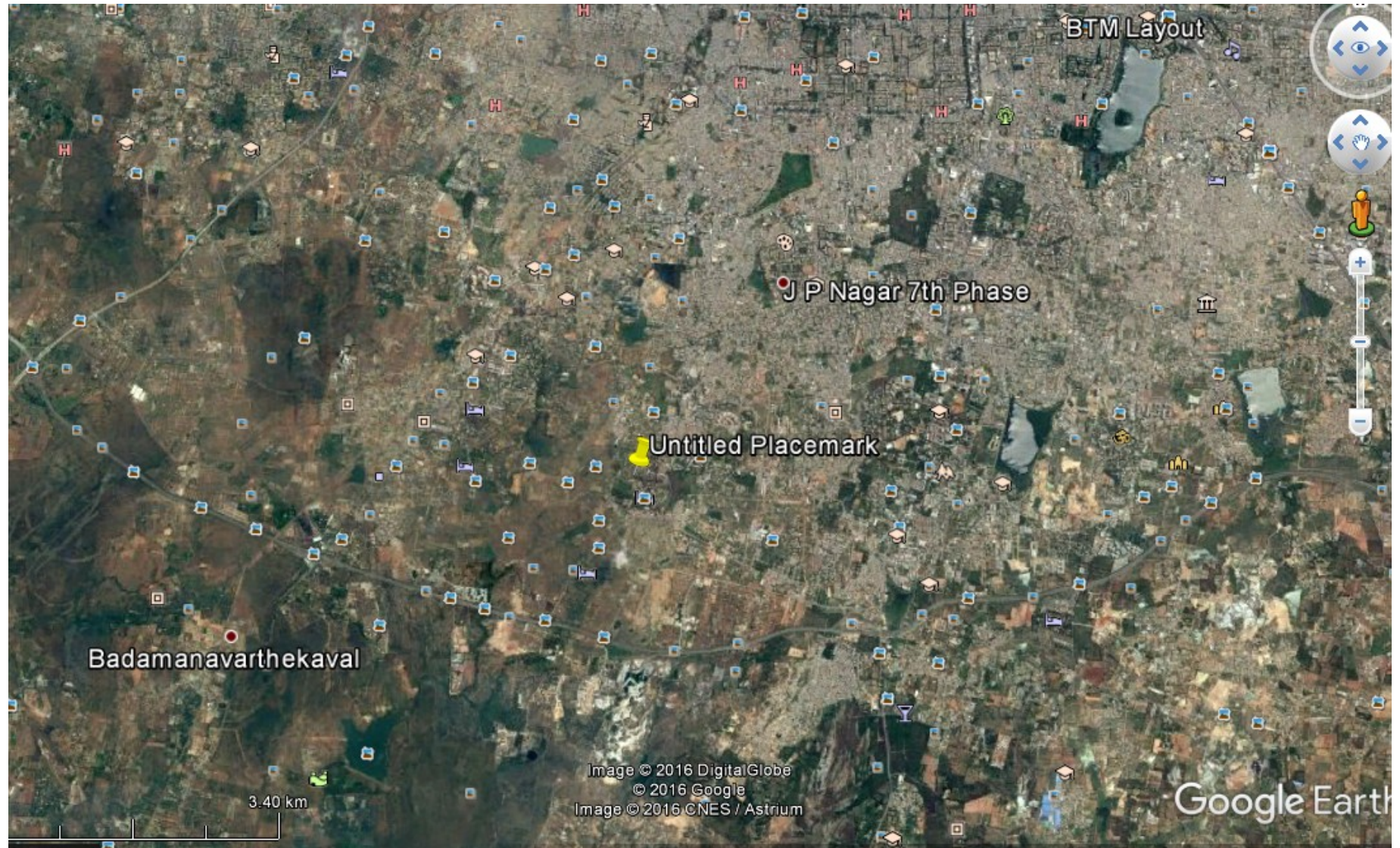
- **Ownership:** Site measuring 100'x100' allotted by Bengaluru Development Authority as *Civic amenity* sit for the said purpose on lease.
- **Location:** Royal Park Residency layout, JP Nagar, 9<sup>th</sup> phase, one of the best planned and developed residential area of BDA located in Bengaluru South.
- **Connectivity:** Yelachenahalli, Metro station on N-S corridor just couple of KM away and also the BMTC Bus terminus. Very well connected by well laid roads.
- **Population profile:** Consists of middle and upper middle class citizens comprising of artists, writers, Jnana Peetha awardees, high ranked bureaucrats, politicians etc who are generally connoisseurs of classical music, dance, drama, folk and similar such cultural activities.
- **Similar such facility:** “*Ranga Shankara*” a well known Theater is 9 KM away from the site. Considering this, this auditorium can serve to nearly 25 lakh residents in and around the project.













# SALIENT FEATURES

- **Building:** Basement plus three floored structure with total carpet area is 1,898 square meters with rain water harvesting and solar panels.
- **Auditorium:** Fully furnished, air conditioned, acoustically treated, equipped with Pro AV facilities for live sound reinforcement, video projection, video recording etc for an audience of around 200.
- **Support facilities:** Art Gallery, rehearsal rooms, green rooms, learning space, library room, lobby etc.
- **Auxiliary facilities:** Office, cafeteria, pantry, workshop, toilets, ramps and basement parking.





**ENTRANCE**



**RECEPTION**



LOBBY





DJVK AUDITORIUM, BENGALURU

I. N. BASU & ASSOCIATES, NEW DELHI

## MAIN HOUSE





**CAFETERIA**

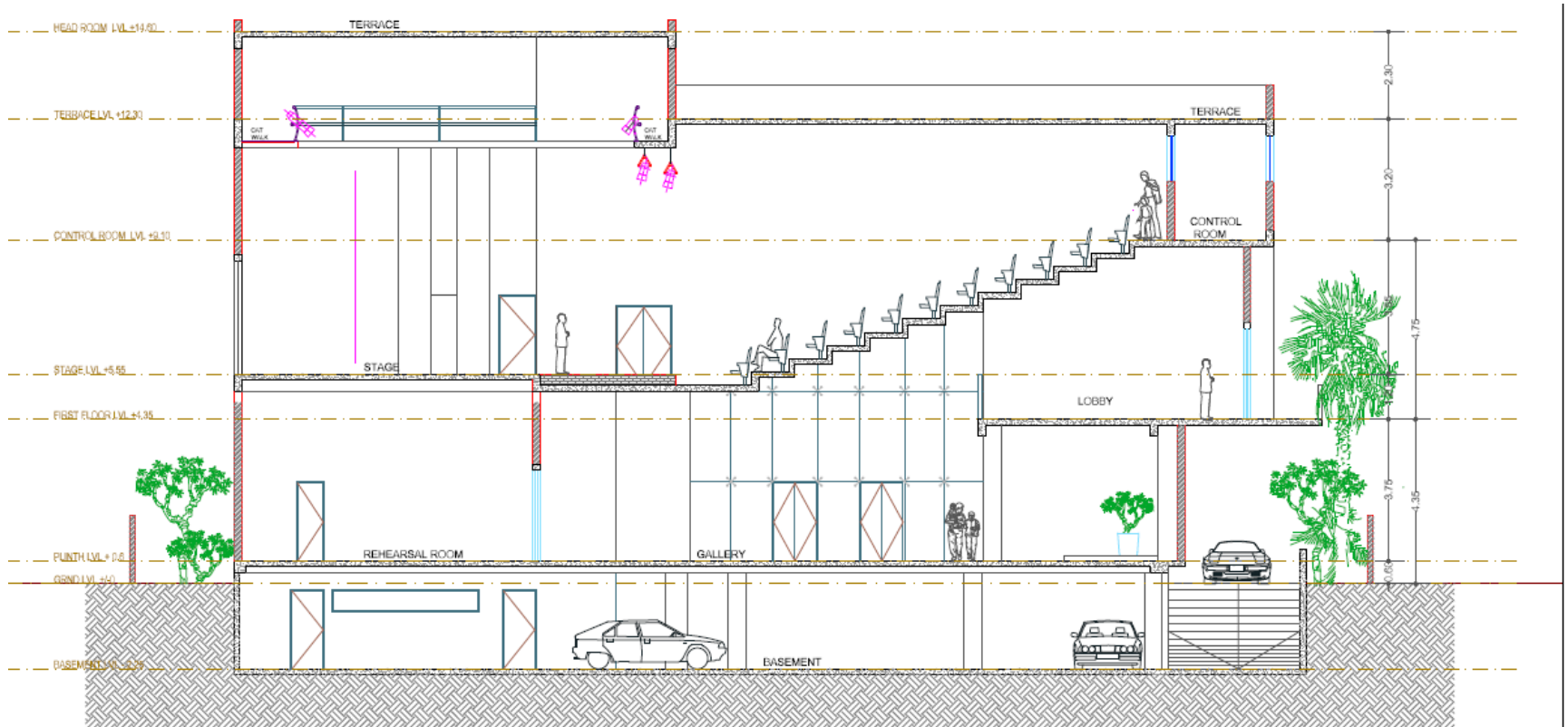


# FRONT ELEVATION



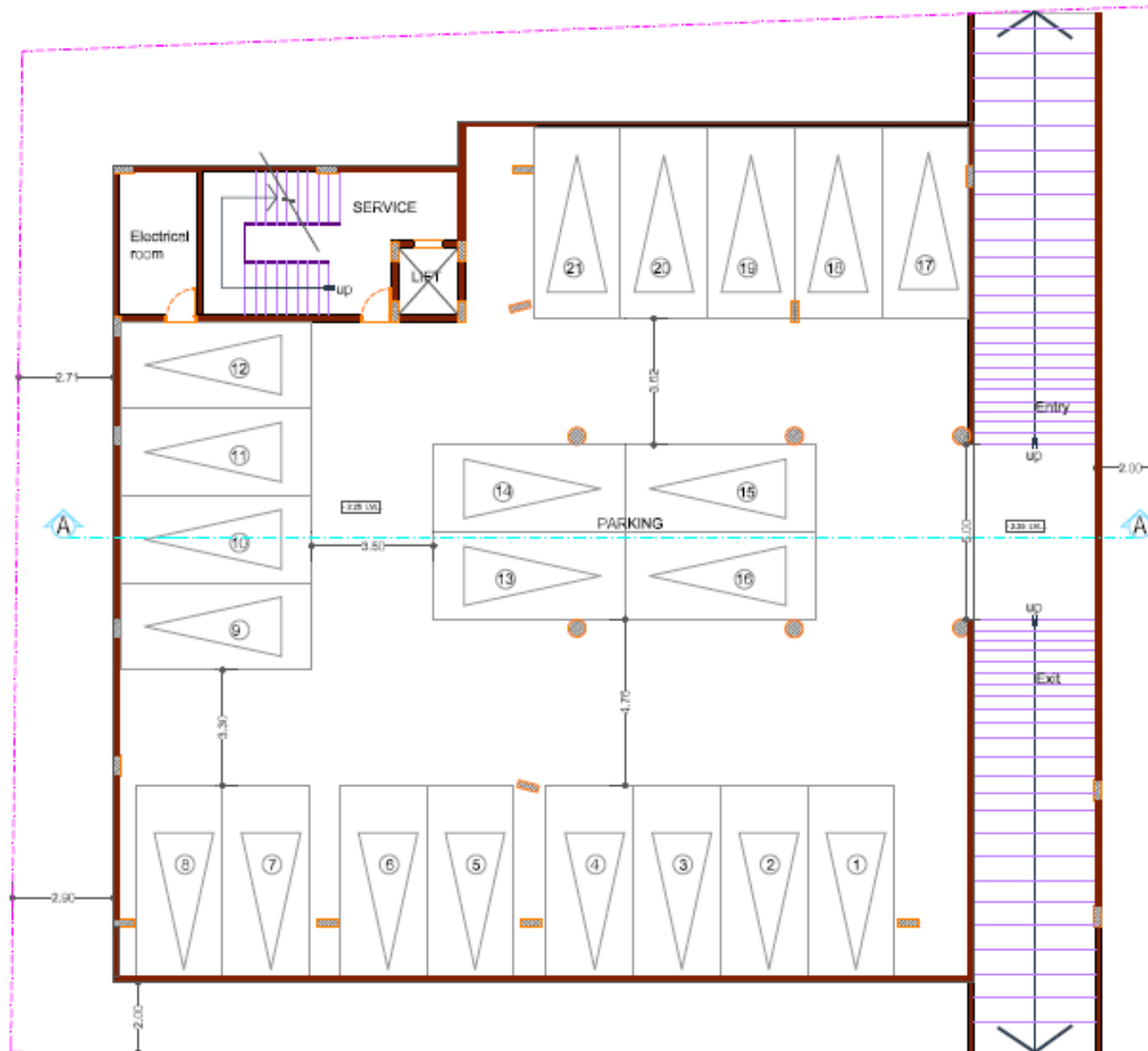


# SECTIONAL VIEW



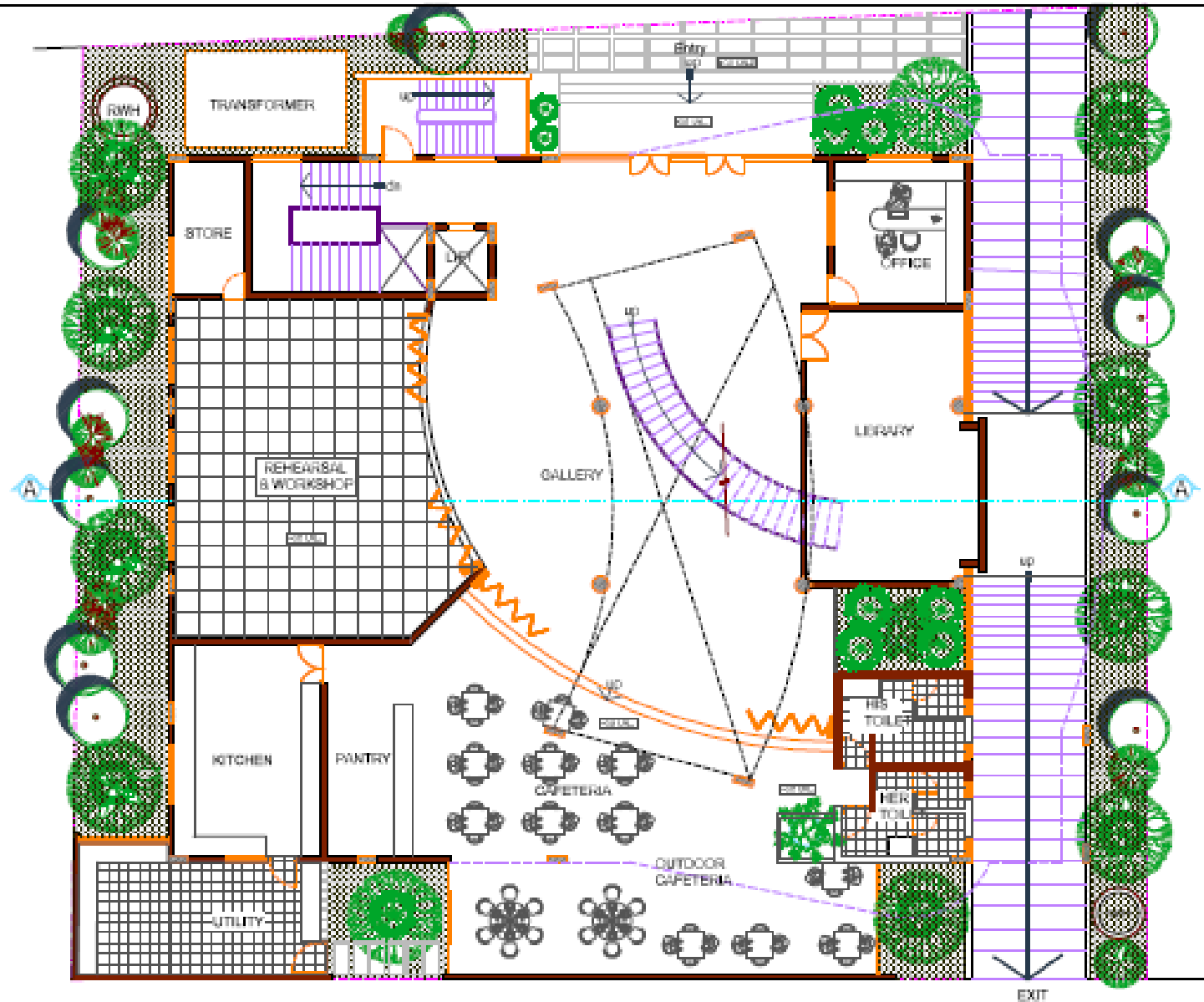


# BASEMENT FLOOR PLAN





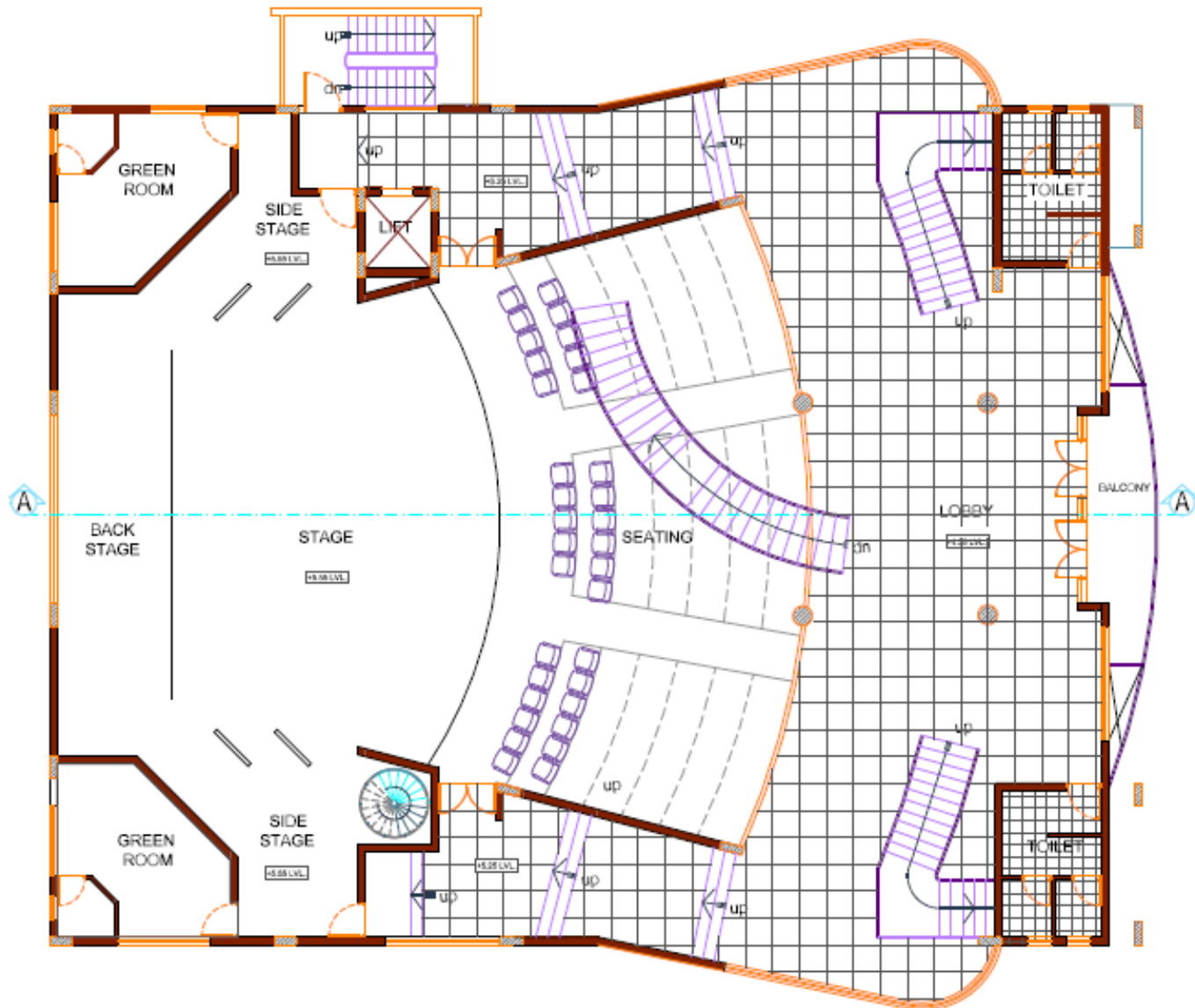
# GROUND FLOOR PLAN







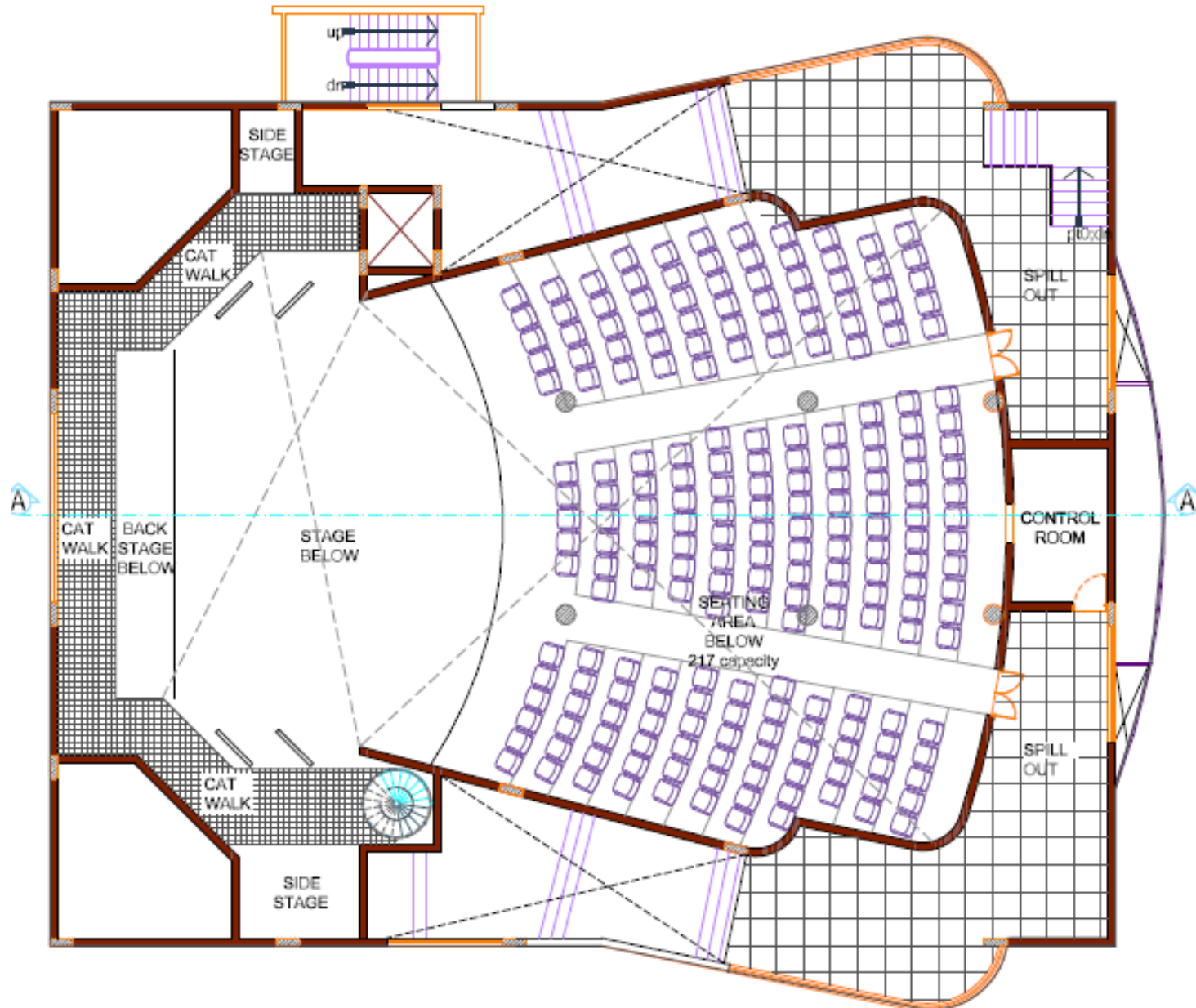
# FIRST FLOOR PLAN

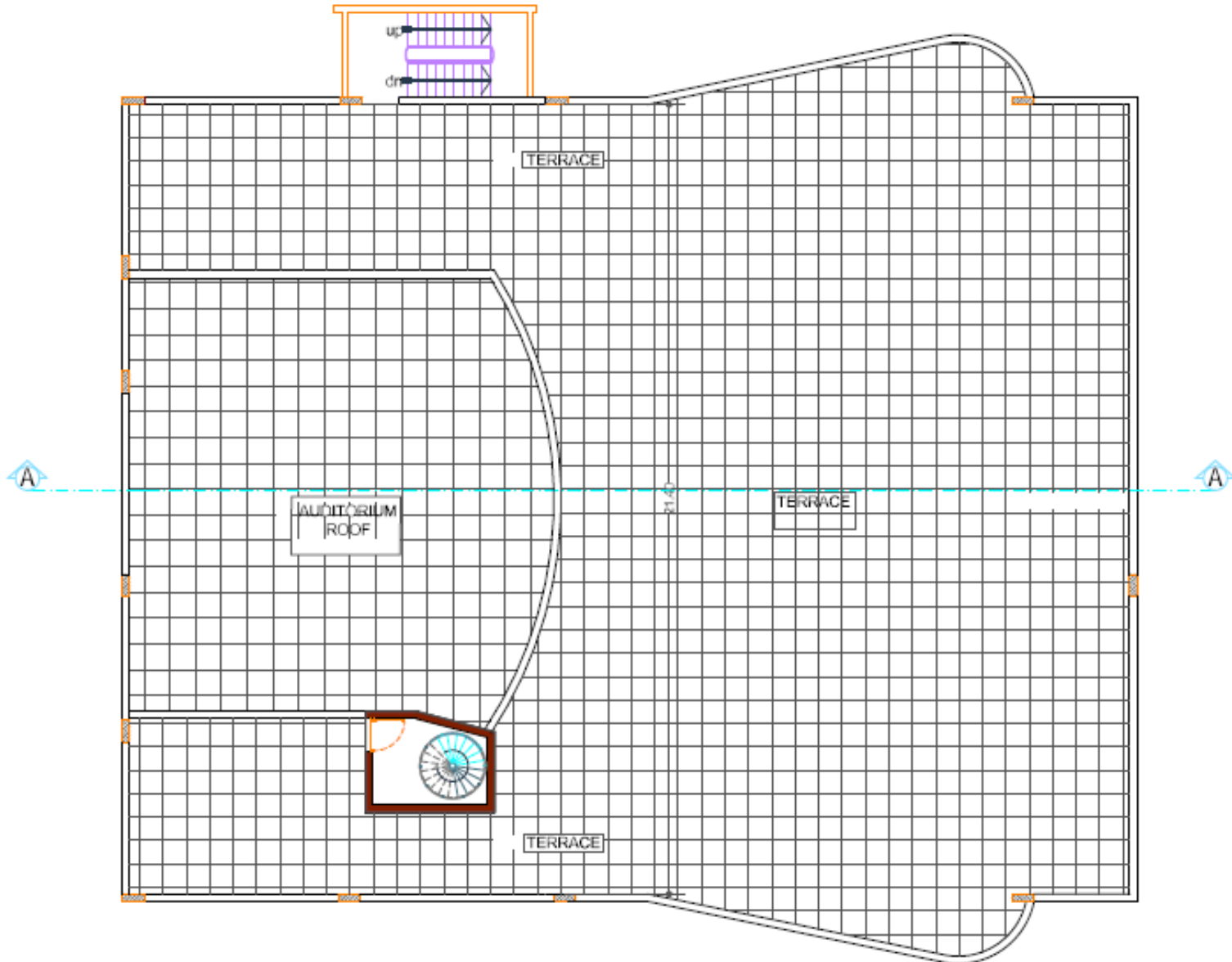






# SECOND FLOOR PLAN







# SPACE UTILIZATION

Utility	Area in mtr <sup>2</sup>
<b>Basement</b>	
Parking area	557
Service core	30
LT distribution room	9
<b>Total</b>	<b>596</b>
<b>Ground floor</b>	
Gallery space	185
Office	18
Rehearsal Workshop room	84

Utility	Area in mtr <sup>2</sup>
Library	44
Cafeteria	111
Pantry	17
Kitchen	30
Utility and Stores	37
Toilets	19
<b>Total</b>	<b>545</b>
<b>First floor</b>	
Lobby	213
Toilet	20
Green rooms	35
Stage	90

Utility	Area in mtr <sup>2</sup>
Side stage	47
Back stage	34
Balcony	11
<b>Total</b>	<b>450</b>
<b>Second floor</b>	
Lobby	83
Control room	20
Auditorium seating area	204
<b>Total</b>	<b>307</b>
<b>Gross</b>	<b>1,898</b>



# INSTALLED AUDIO COMPONENTS

- **Microphones:** wired, wireless, instrument, vocal etc
- **Live audio mixer:** 22 channel with USB connectivity
- **DSP:** 2 in 6 out, BSS, DBX260
- **Equalizer:** Dual, digital, 31 band, Graphic equalizer
- **Stage monitor:** 15“ 2-way, dedicated floor mounted, bass reflex Self-Powered Sound monitor system
- **Subwoofer:** 18" compact, array plus fly mount with 6 KW PA
- **Line array (L & R):** 3 units of 12”, 2 way, Line Array Loudspeaker System plus mount with 6 KW PA





# STAGE ARRANGEMENT AND LIGHTING

- Wooden floored stage suitable for classical dance and drama.
- Motorized main stage curtain, manually operated back curtains, main frill bars, side wings, structure grid and stage control panels, carpeting etc.
- Lectern with microphone and hand held device interface.
- Front of house(FOH) land stage lighting arrangement. Consists of spot, Fresnel, wide angled flood lighting, color filter, with DX remote control.



# VIDEO PROJECTION

- **Projector:** Ray Photon XE Single Lamp 720p 3 Chip DLP Projector with lens, 5000 ANSI Lumens, Contrast 1800:1 nominal resolution, 1280x720 pixels, type 3-chip DLP, Qube XP-E Digital Cinema Server, database driven.
- **Fixed frame Screen:** Ultra vision Screen of 10x9 mtrs dimension with suitable frame ready for Film Projection along with accessories like, spare lamp, Video format converter box, Equipment Rack, Switcher Box, Cables etc.



# OTHER ELECTRONICS

- Five numbers of Robotic Cameras of 1,040,000 effective pixels by deploying three 1/4-type ClearVid, CMOS image sensors, make Sony, type BRC- Z700 with HD-SDI, SD-SDI video card with 20x lens, Sony Remote control unit BRS 200, 40" monitor, Sony Professional media Station XDS-P
- CCTV cameras at strategic location for surveillance and security.
- Automated fire alarm system for the entire complex divided into zones.
- Portable fire extinguishers, water tank, main pump, jockey pump, water pipe line with valves, fire hose etc



# HVAC

- Designed to provide indoor comfort with temperature of  $23\pm 1^{\circ}\text{C}$  and air flow of  $10\text{ft}^3$  per person for auditorium capacity of 200 persons with 20 on the stage.
- Exclusive air conditioner for the stage for comfort of the performing artists.
- Equipment configuration consists of 2x17 TR + 2x11 TR floor mounted packaged type air conditioner for the auditorium and 2x5.5 TR ceiling suspended type Ductable air conditioner for the stage, supply and return ducting etc.
- Other spaces will be naturally ventilated to ensure green concept to reduce the burden on energy consumption.





# DESIGN CRITERIA

Description	Unit	Auditorium	Stage area
Area	Sq.Ft.	5,000	1,500
Occupancy	Nos.	220	20
Lighting Load	Watts / Sq.ft.	1	3
Equipment Load (Heat Generation)	HP	1.0	1.0
Fresh air		10 CFM/person	10 CFM/person
Floor Below		Non-AC	Non-AC
Roof Above		Exposed roof to be insulated with 50 mm thick EPS of TF quality	Exposed roof to be insulated with 50 mm thick EPS of TF quality
Equipment configuration		(2 X 17.0 TR) + (2 x 11.0 TR) floor mounted packaged type air conditioner	2 x 5.5 TR ceiling suspended type ductable air conditioner
<b>Estimated cost: 40,00,000 (Forty Lakhs only)</b>			



# POWER SUPPLY ARRANGEMENT

- Will be normally powered by BESCOM's 11 kV with step/down transformer, HT/LT distribution kiosk etc backed up by captive power source.
- All general purpose lighting luminaries will be LED
- The essential lights and equipment will be backed by UPS.



SL	Item	Months →	1	2	3	4	5	6	7	8	9	10	11	12	13	14	15	16
1	Planning, design and preparation of detailed drawings																	
2	Earth work, foundation and building construction																	
3	Basic interior works like plastering, water, sanitation, etc																	
4	Preparation of design and detailed drawings interior works																	
5	Tendering, engagement of the contractor and agencies																	
6	Preparatory works for acoustic Pro AV conduits, raceways etc																	
7	Installation of auditorium chairs, interiors, Pro AV etc																	
8	Hands-on Training the facilities for the operating staff.																	
9	Preparation of documentation on O&M manual, test report etc.																	
10	Final inspection by statutory authorities and handing over																	



# PROJECT PROGRESS AS ON TODAY

- Revised approval for the building plan has been obtained from the BDA.
- Engaged consultants for the PMC and structural engineering design and drawings.
- A reputed civil engineering firm – Bhagirath Construction Company has been hired for the building construction work after following fair and transparent procedure .
- The Ground breaking ceremony for the project was held on *16-8-2018* by Dr. Chandra Sekhara Kambara, well known Kannada writer, *Jnana Peetha* Awardee and present *Chairman of Kendra Sahitya Academy*.
- The civil construction work for the basement, retaining walls, stair case etc has been completed. RCC of the roofing was cast on *14-4-2019*.
- BDA authorities have inspected the construction site and after ensuring that, the foundation is as per the approved drawings and norms, *Commencement Certificate* has been issued by them to continue with the construction.
- As on now, structural work for the Ground floor is progress. The roofing for the Ground floor is planned to be cast by the third week of *June 2019*.





Dr Chandrashekara Kambara and Sri Chandrappa, Member of Parliament performing the ground breaking ceremony on 16-8-2018





Foundation pillars, 13.2.2019



Retaining wall of the basement, 13.2.2019





Preparatory work for the casting of the RCC roof slab for the basement , 12.3.2019





RCC roof casting for the basement slab in progress, 14.4.2019





Work for the Ground floor structure in progress, 14.5.2019





Preparation are on for casting the RCC slab for the Ground floor, 11.6.2019





Basement, 11.6.2019



